

# PALAC Launch Meeting

3 June 2022



Dr. Albert Chau  
Vice-President (Teaching and Learning)

# About

# H



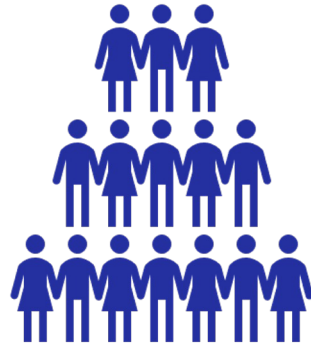
Founded in **1956** (as *Hong Kong Baptist College*)

Acquired university status and renamed as  
*Hong Kong Baptist University* in **1994**

# K

# B

# U



Undergraduates: **7127**

Postgraduates: **4819**

Academic Staff: **1409**

(as of 31 December 2021)



# Campuses



Main Campus



Visual Arts Campus



School of  
Continuing Education



UIC, Zhuhai Mainland





# Strategic Plan

2018 - 2028

Climb High Gaze Far





Caring  
Global  
Creative

# Vision

To be a leading liberal arts  
University in Asia for the world  
delivering academic excellence in a  
caring, creative and global culture.





# Talent 100

HKBU's  
Global Search for  
100 Faculty Members

## HKBU Strategic Priorities 2018-2028

BEST STUDENT EXPERIENCE

RESEARCH EXCELLENCE

CAPACITY BUILDING





# 7

Faculties



ARTS

BUSINESS



COMMUNICATION



SCIENCE



Creative Arts



SOCIAL SCIENCES



CHINESE MEDICINE



# Jockey Club Campus of Creativity 2024





# Hong Kong's 1<sup>st</sup> Chinese Medicine Hospital 2025



HKBU operates Hong Kong's **flagship** Chinese Medicine Hospital

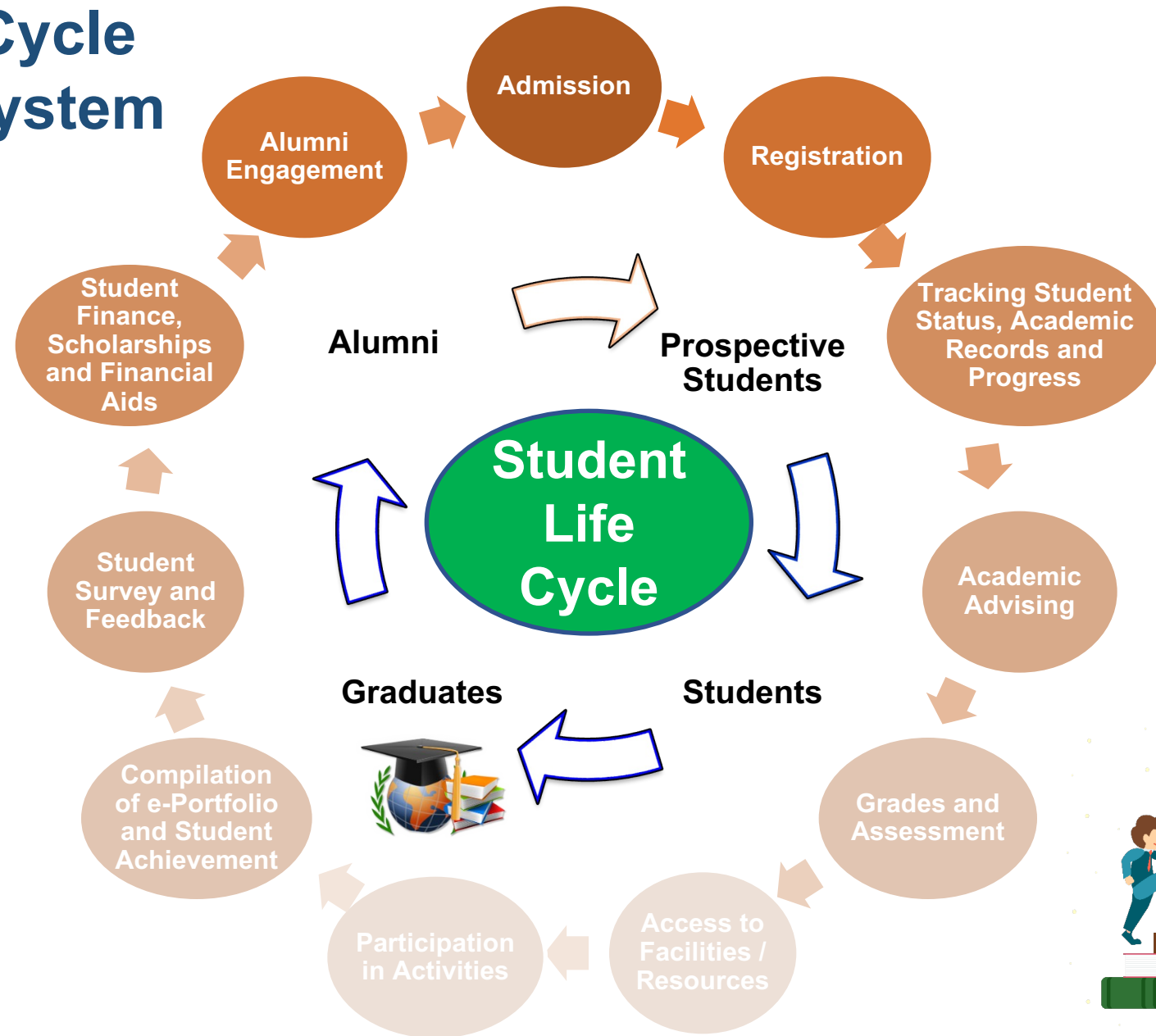


**Hub** for Chinese medicine clinical teaching and scientific research





# Student Life Cycle Management System 2024





# Transdisciplinary Research

3 Research Clusters + 6 Interdisciplinary Laboratories



Arts, Culture,  
Creative Media



Health,  
Chinese Medicine  
& Drug Discovery



Science  
Technology  
AI  
Big Data

Augmented Creativity Lab



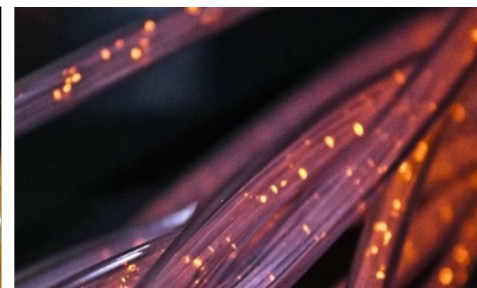
System Health Lab



Computational Medicine Lab



Smart Society Lab



Data Economy Lab



Ethical and Theoretical AI Lab



# Social Impact



**17** School of Chinese Medicine clinics across Hong Kong  
have served more than **2,000,000** patients since establishment



**10,611** student participation in **185** entrepreneurship activities



**441** public lectures / symposiums / exhibitions and speeches to the  
community audience



**60** performances and exhibitions of creative works by staff or students

**Note:** Reporting period is from 1 July 2020 to 30 June 2021




# Whole Person Education

## Global Citizens of the 21st Century



7 HKBU Graduate Attributes



The image features a background of silhouettes of people in business attire, set against a cityscape. A large, semi-transparent question mark is positioned on the right side of the image. The overall color palette is dominated by blues and greens, with a dark blue gradient on the right side.

**What the world  
calls for  
our future leaders**



# 85%

**of the jobs that will exist in 2030  
have not even been invented yet.\***

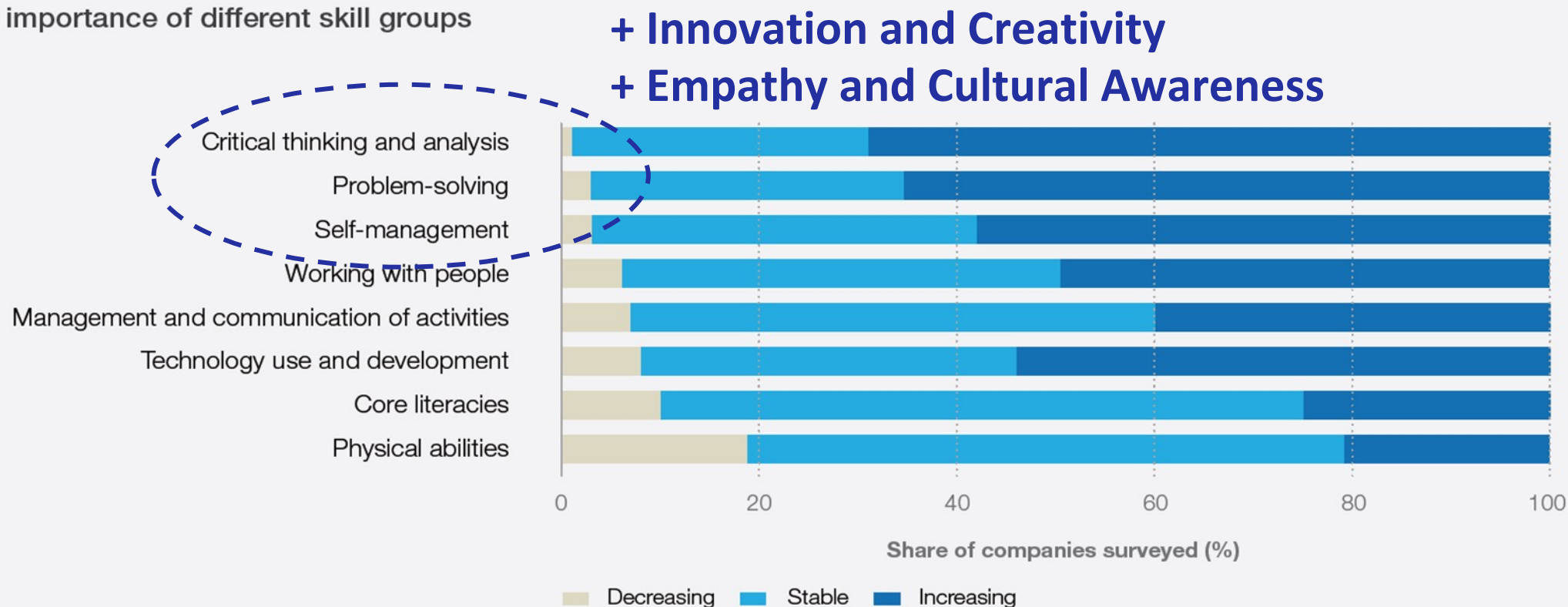
\*The Institute for the Future (IFF)

# Future-ready Students

FIGURE 27

Perceived skills and skills groups with growing demand by 2025, by share of companies surveyed

Relative importance of different skill groups





# Transdisciplinary Education

## Key Features

Problem-oriented & Solution-based

Authentic & Contextualized

Multiple Disciplinary Perspectives

Integration of Knowledge & Skills

## Crucial Abilities

Complex Problem Solving

Active & Fast Learning

Critical & Creative Thinking

Cross-boundary Collaboration

**Solution-based Learning + Co-designed Coursework**  
**<Dedicated Advisor>**

 **Flexible**

 **Customized**

 **All-round**



## Arts & Technology

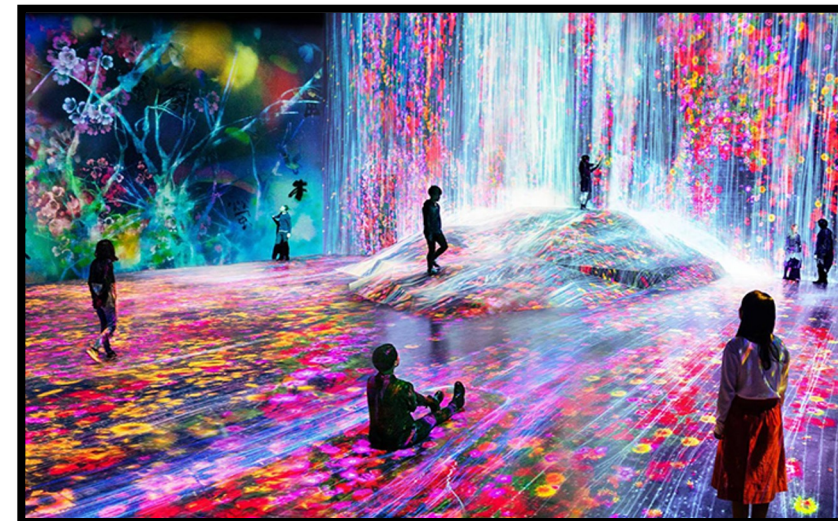
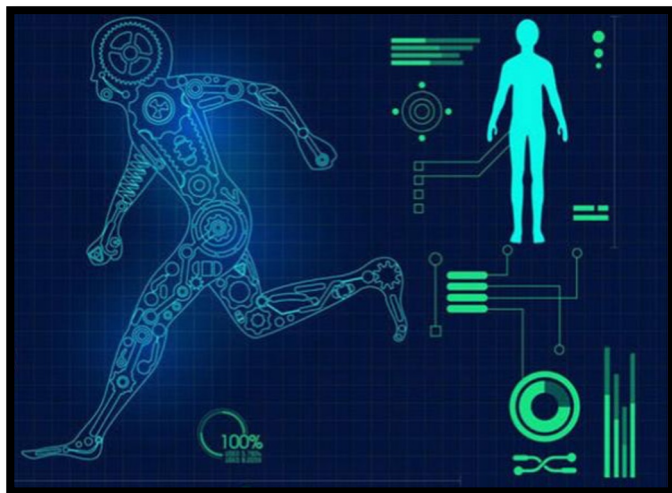


## Arts, Science & Technology (Personalised Pathway)

## Global Entertainment



## Innovation in Health and Social Well-Being





# Social Innovation

#有朋友 #有賞 #有車 #一齊組手  
 #Friends #Prizes #Car! #Assembletogether  
 #StudentPartnership #EnlivenCampus

TriAngle **GO!! 開動吧!!**  
**土瓜灣快線** エクスプレス  
**TO KWA WAN EXPRESS**

Launching Ceremony  
 23 August 2021 | 17:00 - 18:00

## WORLDWIDE TEACH-IN CLIMATE/JUSTICE: LOCAL AND GLOBAL PERSPECTIVES FROM HONG KONG

Date: 30 March 2022 (Wed)  
 Time: 5:15-6:15pm (Hong Kong time)  
 Zoom link: <https://bit.ly/3N9TV0A>  
 Meeting ID: 925 3414 2954  
 Passcode: 845169

In this one-hour panel, 6 Hong Kong-based artist, academics and educators will discuss the pertinent issues of climate change and justice from both local and global perspectives through their own interests and research areas, ranging from art, service-learning, and environmental humanities to French, European, and African culture and politics. The panelists hope to convey one simple message:

**CLIMATE ISSUES MATTER TO EVERY SINGLE GLOBAL VILLAGER.**

**Panel members:**

- Dr. Emily Chew-Quesada, Department of English Language and Literature
- Ms. Michelle Fung, Interdisciplinary Artist
- Dr. Jason Ho, Centre for Innovative Service-Learning
- Dr. Lisa Lam, Centre for Innovative Service-Learning
- Dr. Emily Yuen, Department of Government and International Politics
- Dr. Emily Zong, Department of Humanities and Creative Writing

The Worldwide Teach-In is an international project of the Graduate Program in Sustainability at Bard College in New York, USA, in cooperation with partners worldwide and the Open Society University Network. On 30 March 2022, in different time zones across the globe, there will be a one-day Worldwide Teach-In on climate solutions and justice gathering climate-conscious students and faculty around the world, and Hong Kong Baptist University is proud to be part of this meaningful global initiative. More information available on <https://open.kuh.edu/worldwide-teach-in>.

## GLOBAL VIRTUAL HACKATHON 2021 HACK FOR A SUSTAINABLE 'NEW NORMAL'

Sign Up to discover opportunities!  
 Team Up to work with global talents!  
 Join Us & win prizes, scholarship opportunity!

Application Deadline 31 March 2021

2021 **APR 07-09** Register Now  
 VIRTUAL EVENT

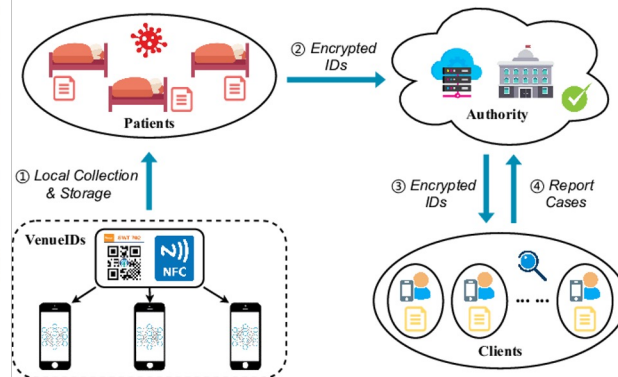
Win Up to **HKD 8,000**

Sponsor: **SEED**  
 Sustainability Education & Entrepreneurship Development Fund

Website: <https://www.comp.hkbu.edu.hk/edg/workshop2021/cta/hack/>



# Advance In Times of Pandemic



## BU-Trace

(A Mobile System for Privacy-Preserving Intelligent Contact Tracing)

## Hong Kong to further leverage TCM in fighting COVID-19

Carrie Lam Cheng Yuet-ngor, HK chief executive, visits the Chinese Medicine Telemedicine Center Against COVID-19 of the Baptist University on March 12.

She said HK will continue to further leverage the advantages of the TCM in the prevention and control of the COVID-19 pandemic and consolidate the TCM as an integral part of the medical system.



## Free Chinese Medicine

For COVID-19 Patients

(Online Advisory, Consultation & Free Medicine Delivery Service)



# Advance In Times of Pandemic

- Adoption of e-Pedagogies for Teaching & Learning (100 % E-learning Adoption)
- Smart Classrooms
- Innovative Pedagogies for Online/Mixed-mode Teaching (e.g. Virtual Presentation, Peer-review of Group Projects)
- Authentic assessment







Online teaching balancing and positioning in a sculpture class using materials from home



# Virtual Exchange



In collaboration with  
**62** partner universities in **23** countries



# Virtual Experiential Learning

**1600+** students from **12** countries  
joined our partnered virtual activities



## Virtual Co-teaching & Guest Lecturing

**27** faculty members from  
**11** partner universities in **5** countries



# VIRTUAL GLOBAL EDUCATION



## Virtual Research Internship



האוניברסיטה העברית בירושלים  
THE HEBREW UNIVERSITY OF JERUSALEM

# Global Virtual Hackathon 2021

## Hack For A Sustainable 'New Normal'



Call for Global Innovators!

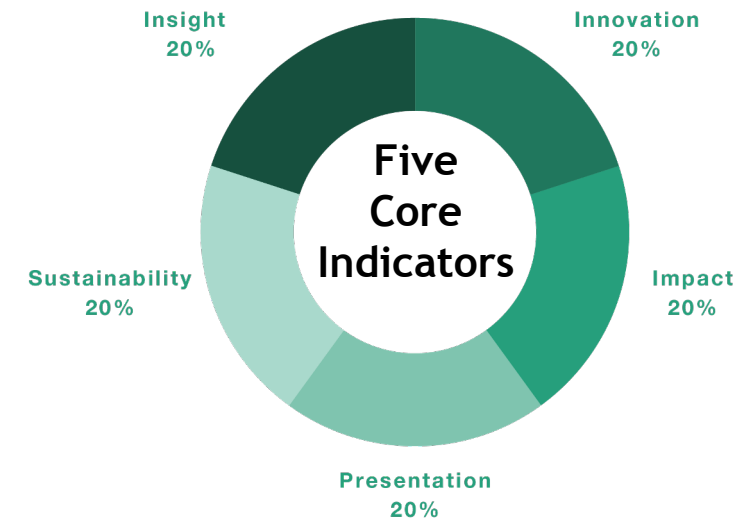
### Young Talent Development Project

- Real world issues with innovative minds
- Creative solutions for the betterment of community
- Intercultural engagement
- Network building
- Design thinking
- Social innovation

### Four Goals



180 students  
38 countries/regions  
20-hour time difference



Co-organized with







# Ideas on Future Collaboration



**Transdisciplinary Initiatives**



**Hackathon**



**SDG-Related Activities**



# Proposed PALAC Hackathon

- Hands-on development of practical innovations for real challenges under selected SDG(s) over a weekend
- Students form Innovation Teams comprised of at least 2 PALAC Member institutions
- Coverage:
  - Innovation bootcamp – covering SDGs, design thinking, pitching, team formation
  - Brainstorming and ideas generation
  - Solution development – creation of poster, 3-minute video (24 hours)
  - Competition and awards
- Members contribute SDG challenges, courses for the bootcamp, facilitators, mentors and judges





THANK YOU